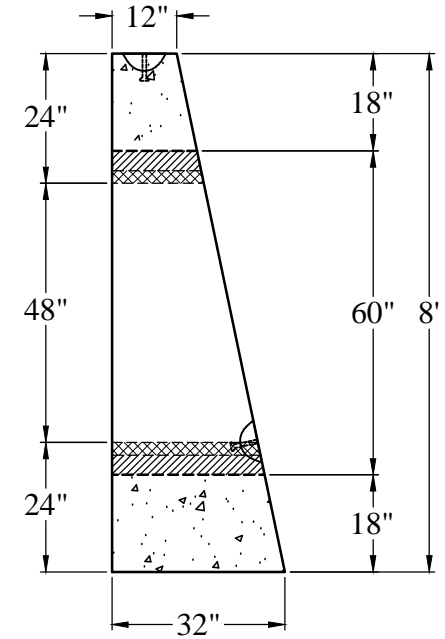
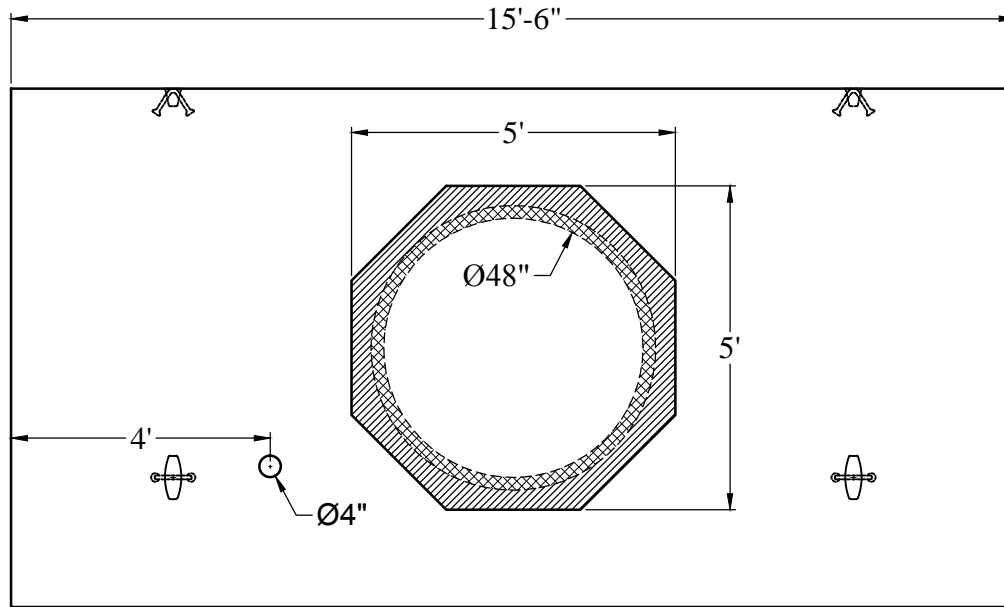


Phoenix Precast Products



Phoenix Precast Products

General Notes

- 1. Reinforcing Steel: ASTM-A615 Grade #60
- 2. Concrete:  $f_c = 5,000$  PSI @ 28 Days Minimum
- 3. Est. Weight: 28,100 Lbs.

Phoenix  
Precast  
Products

N.H. DOT  
48" ADS Headwall